



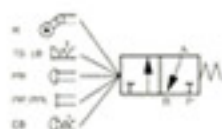
■ Technical Parameter

Specification	G321R, PP, PPL, PB, EB, TB, LB
Applicable Medium	Compressed Air
Pressure Range	0~1.0MPa
Operating Method	Direct Action Type
Lubrication	Needless
Applicable Temperature	-5~60°C
The Button's Standard Color	Black, LB Red; PP, PPL, PB, EB, TB
The Button's Color Available	Green, Black; PP, PPL, PB, TB

● Ordering Code

G	32	1	R
Mechanical Valve	Valve Type 32; 2 Positions/3 Ports 1, G1/8	Pipe Size 1, G1/8	Push Button Type No Mark; Standard Type R : Roller lever PP : Palm button PPL : Protruding Type PB : Palm actuator EB : Palm latching actuator TB : Turning actuator LB : Lever actuator

■ Graphics Sign



■ Figure Dimension

